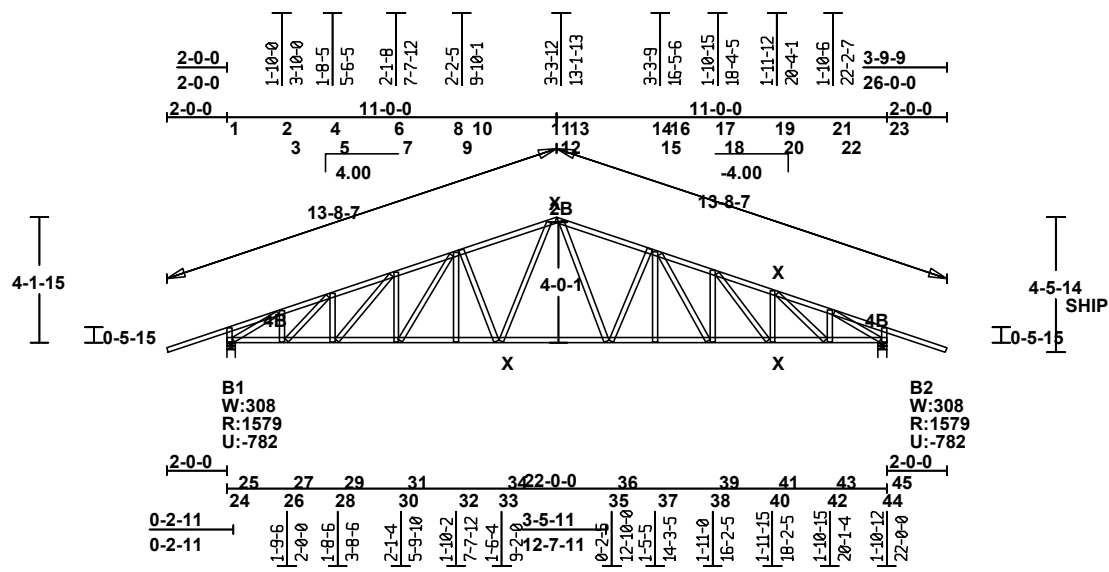


TC	FORCE	AXL	BND	CSI	ID	SCRWS
OL-1	65	0.01	0.67	0.67	1	
1-2	118	0.01	0.63	0.65	1	-SP
2-3	-2297	0.41	0.19	0.58	1	SP-
3-4	-2165	0.38	0.19	0.55	1	
4-5	-2654	0.51	0.11	0.61	1	
5-6	-2627	0.52	0.14	0.64	1	
6-7	-2531	0.51	0.10	0.59	1	
7-8	-2605	0.52	0.10	0.61	1	
8-9	-2297	0.46	0.18	0.62	1	
9-10	-2261	0.45	0.44	0.85	1	
10-11	-2224	0.43	0.51	0.93	1	
11-12	-1713	0.34	0.48	0.79	1	OB- 2B
12-13	-1705	0.34	0.28	0.59	1	2B- OB
13-14	-2197	0.44	0.39	0.83	1	
14-15	-2251	0.45	0.39	0.80	1	
15-16	-2279	0.45	0.15	0.58	1	
16-17	-2592	0.52	0.09	0.60	1	
17-18	-2509	0.50	0.09	0.58	1	
18-19	-2647	0.52	0.11	0.63	1	
19-20	-2659	0.51	0.11	0.61	1	
20-21	-2205	0.39	0.20	0.57	1	
21-22	-2326	0.42	0.18	0.57	1	-SP
22-23	116	0.01	0.64	0.66	1	SP-
23-OR	65	0.01	0.67	0.67	1	

BC	FORCE	AXL	BND	CSI	ID	SCRWS
24-25	0	0.00	0.29	0.29	1	-SP
25-26	2041	0.30	0.29	0.58	1	SP-
26-27	2041	0.30	0.27	0.56	1	
27-28	2463	0.39	0.27	0.65	1	
28-29	2463	0.39	0.03	0.41	1	
29-30	2439	0.40	0.11	0.49	1	
30-31	2439	0.40	0.08	0.48	1	
31-32	2272	0.37	0.04	0.41	1	
32-33	2272	0.37	0.26	0.62	1	
33-34	2034	0.34	0.26	0.58	1	
34-35	1794	0.30	0.14	0.43	1	
35-36	2016	0.33	0.18	0.51	1	
36-37	2257	0.37	0.18	0.55	1	
37-38	2257	0.37	0.04	0.41	1	
38-39	2426	0.40	0.10	0.50	1	
39-40	2426	0.40	0.10	0.50	1	
40-41	2482	0.41	0.02	0.43	1	
41-42	2482	0.39	0.25	0.63	1	
42-43	2074	0.31	0.25	0.54	1	
43-44	2074	0.31	0.28	0.58	1	-SP
44-45	0	0.00	0.28	0.28	1	SP-

WEB	FORCE	CSI	ID	SCRWS
1-24	-423	0.08	1	
2-25	-2374	0.74	1	4B- 4B
3-26	483	0.08	1	
4-27	-789	0.29	1	
5-28	135	0.02	1	
6-29	205	0.05	1	
7-30	-253	0.11	1	
8-31	329	0.12	1	
9-32	249	0.04	1	
10-33	-665	0.55	1	
11-34	645	0.46	1	
13-35	629	0.45	1	
14-36	-623	0.54	1	
15-37	234	0.04	1	
16-38	350	0.12	1	
17-39	-282	0.13	1	
18-40	229	0.04	1	
19-41	100	0.02	1	



B1	W:308	R:1579	U:-782	B2	W:308	R:1579	U:-782
24	25	27	29	31	32	33	35
26	28	30	32	34	36	38	40
28	30	32	34	36	38	40	42
30	32	34	36	38	40	42	44
32	34	36	38	40	42	44	46
34	36	38	40	42	44	46	48
36	38	40	42	44	46	48	50
38	40	42	44	46	48	50	52
40	42	44	46	48	50	52	54
42	44	46	48	50	52	54	56
44	46	48	50	52	54	56	58
46	48	50	52	54	56	58	60
48	50	52	54	56	58	60	62
50	52	54	56	58	60	62	64
52	54	56	58	60	62	64	66
54	56	58	60	62	64	66	68
56	58	60	62	64	66	68	70
58	60	62	64	66	68	70	72
60	62	64	66	68	70	72	74
62	64	66	68	70	72	74	76
64	66	68	70	72	74	76	78
66	68	70	72	74	76	78	80
68	70	72	74	76	78	80	82
70	72	74	76	78	80	82	84
72	74	76	78	80	82	84	86
74	76	78	80	82	84	86	88
76	78	80	82	84	86	88	90
78	80	82	84	86	88	90	92
80	82	84	86	88	90	92	94
82	84	86	88	90	92	94	96
84	86	88	90	92	94	96	98
86	88	90	92	94	96	98	100

Scale: 5/32" = 1'

NUTRUSSTM
A NUCONSTEEL Product

WARNING Read all notes on this sheet and verify all design parameters.
Truss design on this sheet is only valid with NUTRUSST sections and is for an individual building component, not a truss system. Bracing shown on this drawing is not erection bracing, wind bracing, portal bracing or similar bracing which is part of the building design and which must be considered by the building designer. Bracing shown is lateral bracing of truss members only. Any additional bracing, temporary and/or permanent, is the responsibility of the truss erector and/or the building designer. The Professional Engineer's seal indicates only that the truss assembly shown on this sheet meets the acceptable design criteria for the loads, loading condition, truss configuration and spans specified.

Designer:	
TC Live	42.00 psf
TC Dead	10.00 psf
BC Live	0.00 psf
BC Dead	10.00 psf
TOTAL	62.00 psf

WO: C11022_Trusses	
Design Spec: AISI S100-2012	
Buildg Spec: IBC-2018	
Date: 11/22/2022@	17:15:05
Seqn S8.1.0a - 6208	