

TC	FORCE	AXL	BND	CSI	ID	SCRWS
OL-1	65	0.01	0.53	0.53	1	
1-2	106	0.01	0.49	0.50	1	-SP
2-3	-2993	0.39	0.20	0.56	1	SP-
3-4	-2782	0.38	0.19	0.55	1	
4-5	-3527	0.48	0.20	0.65	1	
5-6	-3559	0.49	0.21	0.72	1	
6-7	-3408	0.48	0.25	0.69	1	
7-8	-3318	0.46	0.25	0.74	1	
8-9	-2883	0.40	0.46	0.82	1	
9-10	-2824	0.38	0.52	0.91	1	
10-11	-2246	0.31	0.49	0.78	1	OB- 2B
11-12	-2237	0.31	0.28	0.56	1	2B- OB
12-13	-2796	0.39	0.40	0.80	1	
13-14	-2848	0.40	0.40	0.76	1	
14-15	-3293	0.46	0.28	0.76	1	
15-16	-3385	0.47	0.28	0.71	1	
16-17	-3561	0.49	0.21	0.72	1	
17-18	-3543	0.48	0.21	0.66	1	
18-19	-2829	0.39	0.19	0.56	1	
19-20	-3031	0.39	0.21	0.57	1	-SP
20-21	105	0.01	0.50	0.51	1	SP-
21-OR	65	0.01	0.53	0.53	1	

UPLIFT REACTION(S) :  
 Support C&C Wind Main Wind Non-Wind  
 1 -751 lb -658 lb  
 2 -751 lb -658 lb

Type ID SECTION Fy (ksi) Joints  
 TC 1 20TC18 50  
 BC 1 20TC18 50  
 WEB 1 20TC18 50

20 psf bottom chord live load NOT required on this truss, per IBC/IRC requirements for attics with limited storage.

THIS DESIGN IS THE COMPOSITE RESULT OF MULTIPLE LOAD CASES.  
 Loaded for 100 PSF non-concurrent BCLL.  
 Loaded for 200 lb non-concurrent moving BCLL.  
 Galvanization: G60  
 This truss is designed using the ASCE7-16 Wind Specification  
 Bldg Enclosed = Yes,  
 Truss Location = End Zone  
 Exp Category = B  
 Bldg Length = 60.00 ft, Bldg Width = 25.00 ft  
 Mean roof height = 12.58 ft, mph = 160  
 Occupancy Category II, Wind Dead Load = 7.20 psf  
 Designed as Main Wind Force Resisting System  
 - Low-rise and Components and Cladding  
 Tributary Area = 56 sqft  
 Uplifts based on elevation at or above 0 ft

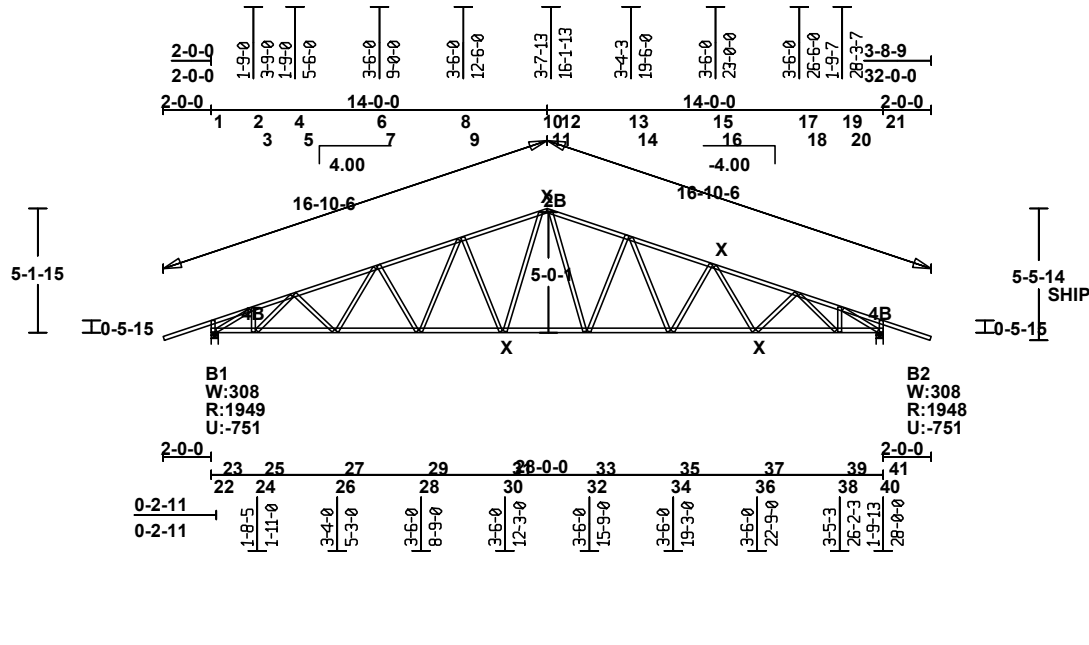
This design based on chord bracing applied per the following schedule:

	max o.c.	from	to
TC	12.00"	-2- 0- 0	30- 0- 0
BC	12.00"	0- 0- 0	28- 0- 0

BRG	X-LOC	SIZE	REACT	HORIZ
1	0- 1-12	3.50"	1949	134
2	27-10- 4	3.50"	1948	134

BC	FORCE	AXL	BND	CSI	ID	SCRWS
22-23	0	0.00	0.23	0.23	1	-SP
23-24	2640	0.31	0.23	0.54	1	SP-
24-25	2640	0.34	0.16	0.50	1	
25-26	3270	0.40	0.25	0.59	1	
26-27	3327	0.42	0.05	0.47	1	
27-28	3298	0.42	0.11	0.48	1	
28-29	3094	0.40	0.16	0.55	1	
29-30	2904	0.37	0.27	0.59	1	
30-31	2592	0.33	0.23	0.55	1	
31-32	2356	0.30	0.17	0.47	1	
32-33	2576	0.33	0.17	0.50	1	
33-34	2872	0.37	0.20	0.54	1	
34-35	3067	0.39	0.15	0.54	1	
35-36	3284	0.42	0.12	0.49	1	
36-37	3328	0.43	0.05	0.48	1	
37-38	3294	0.41	0.25	0.59	1	
38-39	2682	0.34	0.16	0.50	1	-SP
39-40	2682	0.31	0.22	0.54	1	SP-
40-41	0	0.00	0.22	0.22	1	

	DEFLECTION	LOC.	ALLOW.	LC
Vert TL:	-0.38" (L/877)	9-10	L/240	74
Vert LL:	-0.26" (L/999)	9-10	L/360	74
Horz TL:	0.11"			
Cantilever				
Vert TL:	-0.12" (L/215)	21-OR	L/ 90	70
Vert LL:	-0.14" (L/194)	21-OR	L/120	70



==== Joint Locations ====

1	0- 0- 0	22	0- 0- 0
2	1- 7-15	23	0- 2-11
3	1- 9- 0	24	1- 9- 0
4	3- 4- 4	25	1-11- 0
5	3- 6- 0	26	5- 0-15
6	6- 9-12	27	5- 3- 0
7	7- 0- 0	28	8- 6-11
8	10- 3-10	29	8- 9- 0
9	10- 6- 0	30	12- 0-10
10	13- 8-12	31	12- 3- 0
11	14- 0- 0	32	15- 6-10
12	14- 1-13	33	15- 9- 0
13	17- 3-10	34	19- 0-11
14	17- 6- 0	35	19- 3- 0
15	20- 9-11	36	22- 6-15
16	21- 0- 0	37	22- 9- 0
17	24- 4- 4	38	26- 0- 3
18	24- 6- 0	39	26- 2- 3
19	26- 2- 3	40	27- 9- 6
20	26- 3- 7	41	28- 0- 0
21	28- 0- 0		

== X-Brac. Locations (Joints) ==

BC	TC
30	10
36	16

WEB	FORCE	CSI	ID	SCRWS
1-22	-427	0.06	1	
2-23	-3091	0.68	1	4B- 4B
3-24	728	0.09	1	
4-25	-1051	0.30	1	
5-26	137	0.02	1	
6-27	244	0.03	1	
7-28	-405	0.24	1	
8-29	499	0.18	1	
9-30	-830	0.80	1	
10-31	820	0.46	1	
12-32	810	0.46	1	
13-33	-802	0.79	1	
14-34	518	0.19	1	
15-35	-438	0.27	1	
16-36	253	0.03	1	
17-37	115	0.01	1	
18-38	-1014	0.31	1	
19-39	697	0.09	1	
20-40	-3128	0.71	1	4B- 4B
21-41	-422	0.05	1	

Each connection requires 3/8" diameter proprietary bolt supplied by NUCONSTEEL  
 SCRWS = The required number of double-sided #14 screws at each end of the truss member: SP = Spacer supplied by NUCONSTEEL

Scale: 1/8" = 1'

**NUTRUSSTM**  
 A NUCONSTEEL Product

**WARNING** Read all notes on this sheet and verify all design parameters.  
 Truss design on this sheet is only valid with NUTRUSST sections and is for an individual building component, not a truss system. Bracing shown on this drawing is not erection bracing, wind bracing, portal bracing or similar bracing which is part of the building design and which must be considered by the building designer. Bracing shown is lateral bracing of truss members only. Any additional bracing, temporary and/or permanent, is the responsibility of the truss erector and/or the building designer. The Professional Engineer's seal indicates only that the truss assembly shown on this sheet meets the acceptable design criteria for the loads, loading condition, truss configuration and spans specified.

Designer:		WO: C11028_Trusses
Dsgn Chk:		
Engg Chk:		
Cutting :		
TC Live	42.00 psf	Design Spec: AISI S100-2012
TC Dead	10.00 psf	Buildg Spec: IBC-2018
BC Live	0.00 psf	
BC Dead	10.00 psf	
TOTAL	62.00 psf	Date: 11/22/2022@ 18:37:55
		Seqn S8.1.0a - 6223